

**SUPERIOR**  
INSULATED PANELS LTD  
MANUFACTURERS OF ALL TYPES OF COMPOSITE PANELS

## THERMAL GRP

The Outer Face of Thermal GRP is a film coated glass reinforced plastic. This specially developed film is heat bonded to the laminate during manufacture cannot be removed. The film adds significantly to the life of the panels by providing ultra-violet light and graffiti resistance, it ensures that the application of anti-graffiti spray will not affect or discolour the panel.

## THERMAL PVC

Thermal PVC is faced with a 200 micron (nominal thickness) high performance Plastisol vinyl coating on a galvanised steel hot-dip zinc coated substrate to BS EN 10 147. The standard reverse side coating is a specially formulated two-coat protective system of corrosion resistant primer topped with heat cured polyester. The plastisol facing is available in a wide range of British Standard Colours to meet most modern architectural designs.

## THERMAL PPC

Thermal PPC is polyester powder coated steel or aluminium faced laminate. The exact specification of the panel will depend on the designers particular requirements for colour, grade and base metal. The exact facing is available in a range of British Standard and RAL Colours to meet most modern architectural designs.

## THERMAL UPVC

Thermal UPVC combines the weathering characteristics of high quality UPVC with a silk matt finish. The basic colour of the panel is white and can be shade matched to the various whites of most major PVC-U window and door profile extruders. The result is a panel that not only match the materials that it is fitted in combinations with, but one that will look good for years to come.



## THERMAL HPL

Thermal High Pressure Laminate offers designers an alternative facing which not only is aesthetically pleasing but is robust and very practical for use in those areas where vandalism may be a problem. Its tough 3mm facing consists of resin impregnated cellulose faced with U.V. resistant melamine and offers exceptionally high impact strength and weather resistance.

## THERMAL SFP

Where traditional stone-dashed finishes are required Thermal Stone Faced Panel is the ideal product. It can be used in curtain-wall or cladded building systems. The attractive stone chip finish is fused to a 6 or 7mm polyester resin cladding panel during manufacture and gives the panel a traditional dashed appearance, which blends naturally with environmentally conscious designs.

## THERMAL FRC

Thermal Fibre Reinforced Cement panel is a composite cladding and curtain-wall panel which can also be specified with confidence in a variety of applications such as soffit linings. The glazed face of the panels is available in a variety of British Standard colours which blend easily with a wide range of brick shades, glass tints and common indigenous stone. It is produced from fully compressed autoclaved rigid fibre cement sheets. Sophisticated colour schemes and patterns can also be achieved using Thermal FRC.

## PANEL CORE

The core of the panels depends on the intended application and the specified thermal conductivity, various insulating cores are available including: - Rigid Urethane Foam, Expanded or Extruded Polystyrene, Phenolic Foam, Mineral Wool, Cement Particle Board and Moisture Resistant boards.

## FIRE PROTECTION

Fire rating of up to and including 1 hour fire resistance can be attained. Our technical services department should be consulted for the fire ratings of particular panels.

## THERMAL PROPERTIES

'U' Values as low as 0.25W/m<sup>2</sup>K can be attained from construction incorporating Thermal panels. A thermal and condensations risk analysis service is available on request, please contact our technical services department.

## MAINTENANCE

The panels should be cleaned by washing with low pressure water systems. Graffiti may be removed using proprietary systems. However it is advised that prior to carrying out such work, a small test area is undertaken.


## HEALTH AND SAFETY

Thermal products are chemically inert and safe to use. Leaflets satisfying the requirements of the 'Control of Substances Hazardous to Health Regulations, 1998' (COSHH) are available.

## PACKAGING

The panels are supplied wrapped and palletised with labels giving product code numbers and sizing details. Decorative panels can be supplied inter leaved or with low-tack film applied to the decorative facings. Individual panels can be numbered to accommodate fixing patterns or differently sized grids.





Your panels are cut to size, assembled by vacuum press and packed in our modern workshop by experienced, fully trained staff.

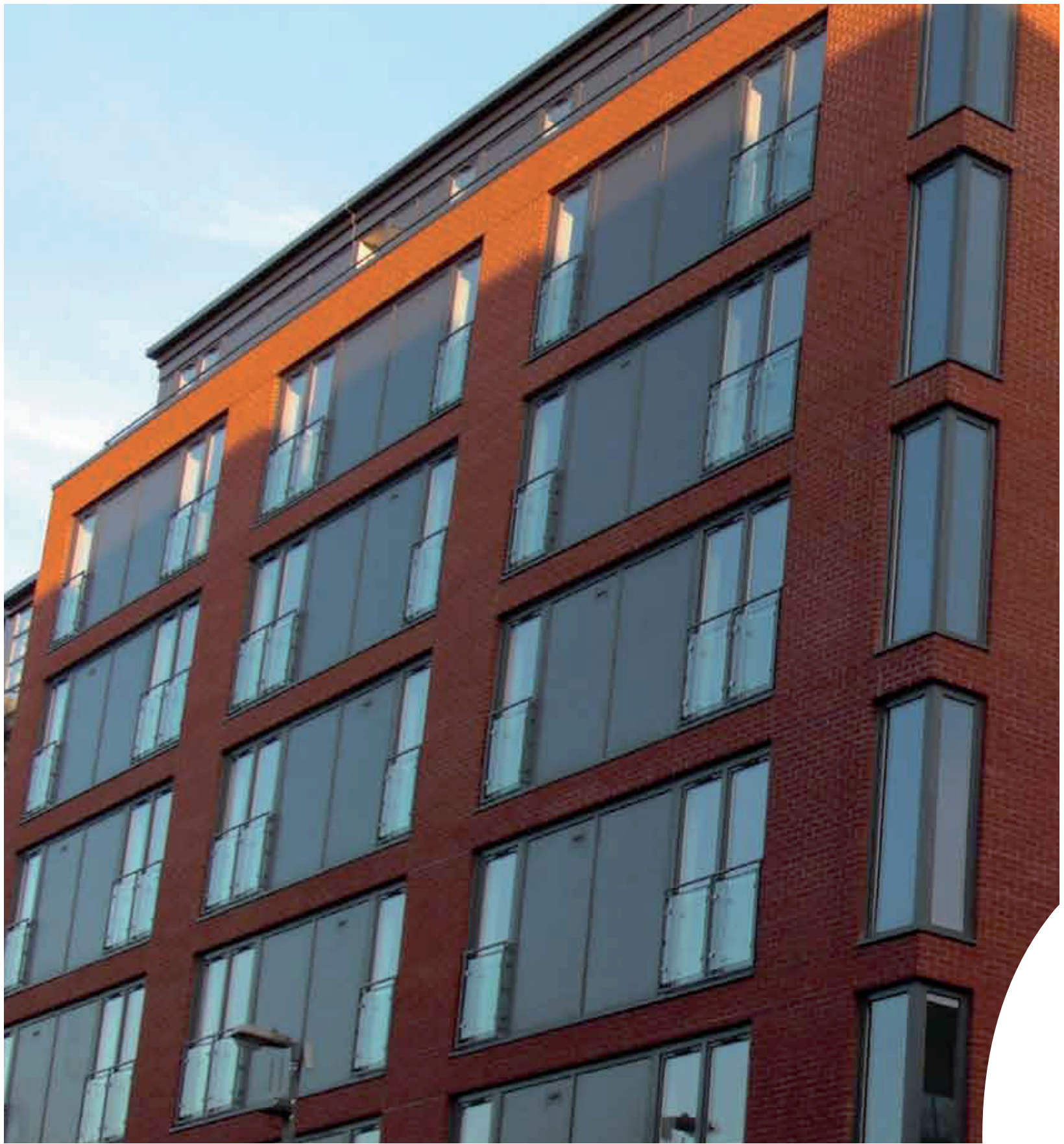
Only the highest quality products are used to create the colour and finish that you require. These include proprietary brands such as;

- POWDERCOATED ALUMINIUM
- TRESPA
- LAMINA
- PLASTISOL
- UPVC
- STENI

- 10 Year Guarantee
- Flexible delivery options
- Widest choice of products

CURRIERS CLOSE INDUSTRIAL ESTATE, UNIT 3 CURRIERS CLOSE, CANLEY, COVENTRY, CV4 8AW

TEL: 024 7642 7680 FAX: 024 7642 7681



## **MISSION STATEMENT**

By implementing a quality system that focuses on customer satisfaction and continual improvement, it is our aim to supply products into the market place that have a quality second to none. This backed up with a service that starts at specification stage right through to delivery means that a variety of customers including architects, local authorities and end users can have peace of mind that the correct materials will be delivered in first class condition and on time.

CURRIERS CLOSE INDUSTRIAL ESTATE, UNIT 3 CURRIERS CLOSE, CANLEY, COVENTRY, CV4 8AW  
**TEL: 024 7642 7680 FAX: 024 7642 7681**